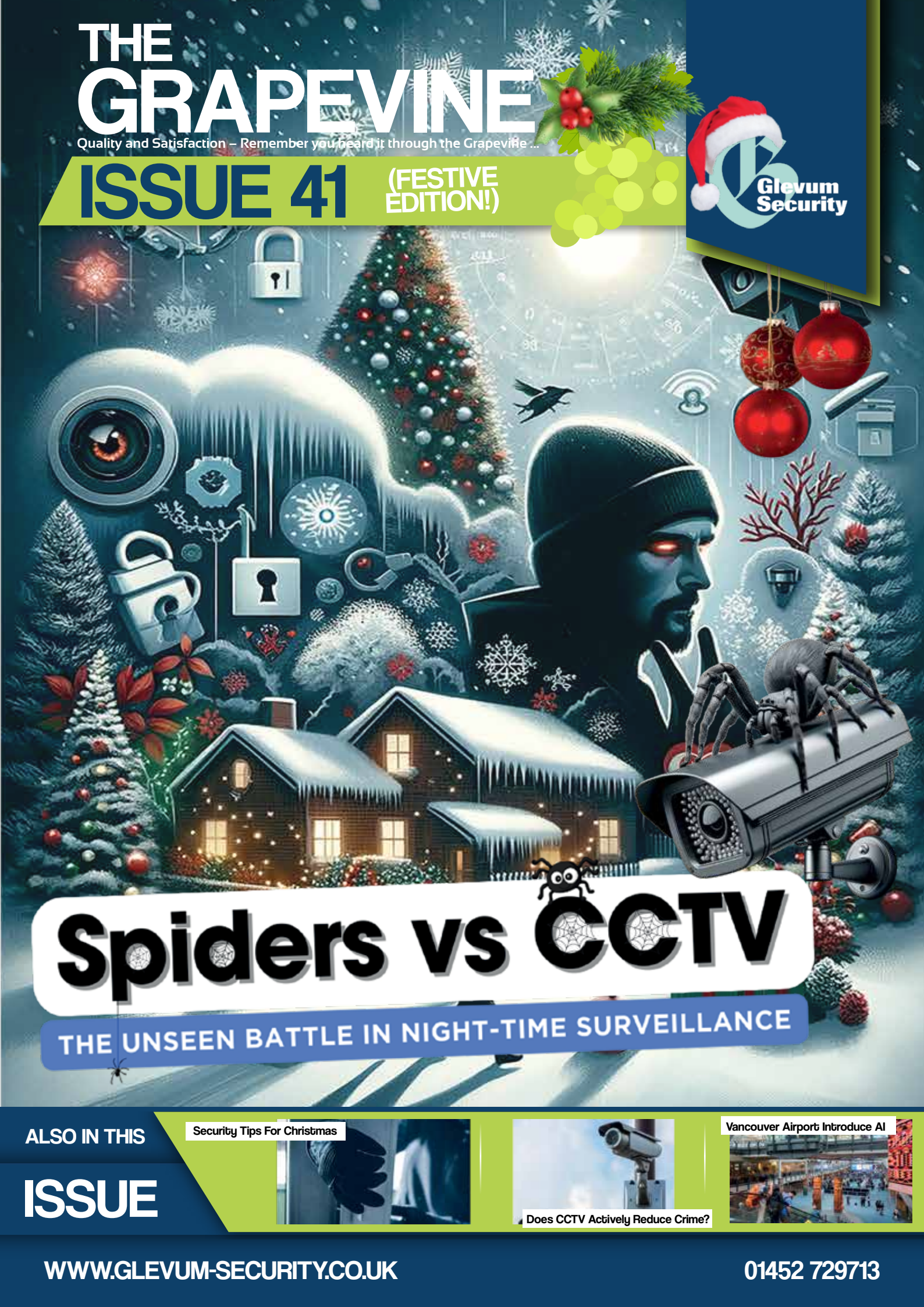


# THE GRAPEVINE

Quality and Satisfaction – Remember you heard it through the Grapevine ...

## ISSUE 41

(FESTIVE EDITION!)



# Spiders vs CCTV

THE UNSEEN BATTLE IN NIGHT-TIME SURVEILLANCE

ALSO IN THIS

## ISSUE

Security Tips For Christmas



Does CCTV Actively Reduce Crime?

Vancouver Airport Introduce AI





## Well, the Winter Weather is well and truly here!

Anyone with a CCTV system will be familiar with the common issue of spider webs appearing across the lens.

Security engineers and homeowners alike have all complained about spider webs, and as an additional issue, spiders can also trigger intruder alarms and cause clients to have much explaining to do to their neighbours after yet another false alarm!

CCTV cameras operate at a very slightly warm running temperature, which attracts insects like spiders. Whilst everyone wants to live in harmony with nature, pesky spider webs can be quite damaging to the picture quality of your CCTV camera, causing distortion and obscuring the

image. Thankfully, there are ways to help keep them away. These range from old wives tales to more comprehensive solutions, and will probably require a little trial and error on the part of the property owner to see what works best for them. See more within this Grapevine. Hey this is the Festive Grapevine, maybe Santa will bring you some 'Spiderex'!

Regardless, we hope you have a Great Christmas & a Cobweb free New Year!

**Are you on the Glevum Radar?**  
– 'Be the first to know, not the last!'



**Career Opportunities:** If you know of someone wanting a change in career and would like to join our Mobile Patrol Team give them our details and tell them to get in contact.

## Physical and cyber security precautions when travelling in 2024

Surveillance systems can track the locations of mobile phone users and spy on their calls, texts and data streams. The Washington Post has reported on such systems that are being turned against travellers around the world, according to security experts.

When travelling anywhere in the world, for business or pleasure, citizens need to be aware of and alert to looming physical and cybersecurity threats. The exponential number of headlines over the past few years is a strong indication that both physical and digital risks are evolving and increasing. The scope, severity and complexity of physical and cyber risks are increasing and becoming more dangerous and destructive.

On the physical side, threat actors are actively seeking "soft targets" – public events, social settings, mass audience venues, etc. – to communicate their message, sow

chaos and inflict catastrophic harm. On the digital or cyber side, we have seen a shift from "thrill hacking," to an increase of "hacking as a business" (through credential compromise and ransomware), to an increase in "hacking for harm" – with the rise of "nuke ware" and ransomware without a clear financial motivation.



At the end of the day, travel security is not rocket science. Simply put, travellers need to be aware and situationally alert at all times, don't access unknown, unsecured or public Wi-Fi if at all possible, try to "blend in" – you don't have to try to look like a local but travellers should avoid gaudy and expensive attire wherever possible and use your common sense – if an offer, invitation or opportunity seems too good to be true... it probably is. Make sure to stay safe when travelling in 2024 and be sure to stay aware of both physical threats and cyber threats.

# Does CCTV actively reduce crime?



Surveys show that video monitoring can reduce certain types of crime. The College of Policing's Crime Reduction Toolkit suggests that CCTV is "associated with a statistically significant decrease in crime". According to one study, crime decreased by 13% in places with CCTV, compared to places without it. It also revealed that certain types of crime are affected by the presence of CCTV: drug-related crime decreased by 20%, and vehicle and property crime by 14%.

However, violent crime was not affected by the presence of cameras. In these cases, video footage instead becomes an invaluable tool to track down suspects afterwards. Recent events such as the Charlie Hebdo attack, the Boston Marathon bombing and the 7th July attacks in London all relied heavily on CCTV footage to identify and track down suspects.

Based on the studies the toolkit consulted, they conclude that CCTV's effectiveness depends on how and where it is used.

## How And Where Does CCTV Work Best?

The same study showed that crime reduced by 37% overall in car parks with CCTV cameras present, and by 12% in residential areas. For crimes related to vehicles and property, cameras have been proven to reduce crime.

Still, it's not just the mere presence of cameras that deters criminals, it's also how they are monitored by security staff. Active monitoring (which is where cameras are actively watched by trained staff for criminal activity) was shown to reduce crime by 15% more than CCTV systems without

active monitoring. This is because security staff and monitor and proactively manage criminal activity in real time - effectively stopping it in its tracks.


This type of security is effective in all kinds of scenarios and industries, particularly when cameras are enhanced with intelligent video analytics, which help operators to identify genuine incidents whilst filtering out false alarms.

When combined with other security measures, such as improved lighting, perimeter fences and signalling, video surveillance was shown to reduce crime by an impressive 34%.

So as a whole, the presence of CCTV systems, especially in built up areas, has proved to be effective against the fight that is crime, but more can certainly be done and introduced to improve these statistics going forward.







# Spiders vs CCTV

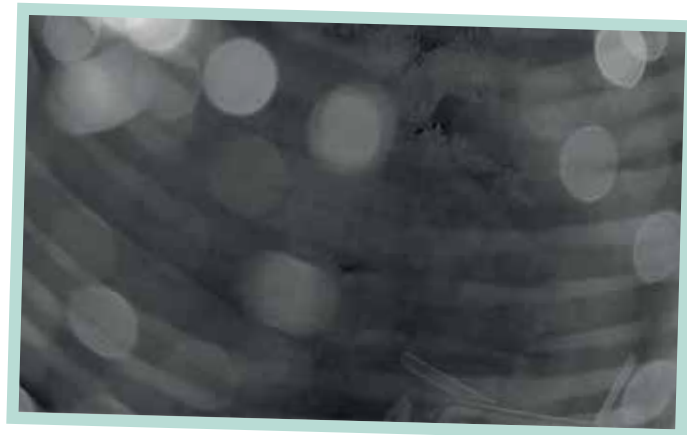
## THE UNSEEN BATTLE IN NIGHT-TIME SURVEILLANCE



In the world of night-time surveillance, a small but significant issue often goes unnoticed – the battle between security cameras and spiders. While CCTV systems are designed to provide round-the-clock monitoring and safety, they inadvertently attract arachnids, leading to obscured vision and compromised security. This article delves into the causes of this problem and explores practical solutions to keep your surveillance clear from these eight-legged intruders.

### The Attraction Factor

Why do spiders find CCTV cameras irresistible? The answer lies in the design and operation of these cameras. Most security cameras emit infrared light to capture clear images in low light conditions. This light attracts insects, which in turn attract spiders looking for an easy meal. Additionally, the warmth produced by the camera serves as a cosy spot for spiders to reside. The presence of spiders and their







✓ POSITION CAMERAS AWAY FROM LIGHT SOURCES OR AREAS PRONE TO INSECT ACTIVITY.

✓ REGULARLY CLEANING THE CAMERA LENS AND SURROUNDING AREA CAN PREVENT WEB ACCUMULATION.

✓ USE SPIDER REPELLENTS AROUND CAMERA INSTALLATIONS TO KEEP THEM AT BAY.

✓ INSTALLING PHYSICAL BARRIERS LIKE COVERS OR SHADES CAN DETER SPIDERS FROM SETTLING ON THE CAMERAS.

webs can severely impact the effectiveness of a CCTV system. Webs can obscure the camera lens, rendering footage useless. This is particularly problematic during night-time, when visibility is already limited. The motion triggered by spiders can also trigger false alarms, leading to unnecessary checks and wasted resources. At Glevum Security, our CCTV Monitoring service has been interrupted by these eight-legged friends in the past. To combat this issue, several preventative measures can be employed.



Technology also offers innovative solutions. Some companies have developed spider-proof CCTV cameras with built-in vibration mechanisms to dislodge webs and spiders. Others have incorporated self-cleaning lenses to maintain clarity. The issue of spiders on CCTV cameras is more than a mere nuisance; it's a security concern that needs addressing. By understanding the attraction factors and implementing both preventative and innovative solutions, we can ensure that our night-time surveillance remains uninterrupted and effective. This small step can make a significant difference in maintaining the integrity of security systems and the safety they are designed to provide.



SpiderEx is a spider repellent spray and works to remove spiders and reduce spider infestations. You won't need a spider catcher as SpiderEx has been specially formulated to help remove spiders and reduce nesting in almost any area it's sprayed.

SpiderEx is an effective spider spray deterrent that can be used in your home, caravan, garden shed and many other areas.

Spiderex and citronella oil are known to be particularly effective, so why not soak a cloth in scented oil and attach it to your security system?

Otherwise, you could simply add a few drops of the oil to the camera equipment itself, but be careful to avoid placing directly on the lens or this could obscure the image.

## Deny Spider Entry

Making the surfaces of your camera too slippery for spiders to take hold is a more ecologically-sound way of handling the problem, but it can be surprisingly efficient, too.

This can be easily achieved with a dab of Vaseline on the casing of your security kit, but you should check with your installer and any maintenance professionals first, to ensure you aren't applying to areas which could heat up and cause damage to the system.

## Spiderex can be brought on Amazon

SpiderEx spider spray dramatically reduced false alarms in CCTV systems that can be caused by spiders and other insects, designed to stop spiders spinning webs and nesting on CCTV cameras.

Make sure to contact us for any more information surrounding this common problem found in winter.










# How is AI changing the security market?



Artificial intelligence is more than just the latest buzzword in the security marketplace. In some cases, smarter computer technologies like AI and machine learning (ML) are helping to transform how security operates. AI is also expanding the industry's use cases, sometimes even beyond the historic province of the security realm.

AI enables us to "see" in new ways. It's impossible for humans to consume and accurately monitor the vast amount of video streams and other data available at most businesses, so AI is arriving at a time when we need it the most. Objects and actions can be identified, classified and organised

so that humans can focus on what matters. It removes the guesswork out of daily tasks, reduces human error, and makes it easier for owners and operators to maximise their security systems and manage properties.

AI systems have also raised the bar in terms of end-user expectations, considering that smart phones already employ an impressive degree of security intelligence (including facial recognition). How far can AI go in the security industry? AI can continue to have a significant, positive effect for security professionals, but it must never be seen as a viable replacement for human intelligence.



## i-PRO announces revolutionary new AI on-site learning camera



i-PRO Co. Ltd, a pioneer in professional security solutions for surveillance and public safety, announced a revolutionary new line of cameras that turn non-AI network cameras into AI smart devices. Using AI on-site learning, the new X Series enables users to teach the camera about specific objects they want to monitor.

With support for up to nine AI applications, it is the most powerful AI camera to date from i-PRO. The AI Processing Relay is an innovative feature that allows customers to add AI capabilities to their existing, non-AI, surveillance cameras, including cameras from other manufacturers, making them smarter and more efficient.

## Freevolt upgrade to fingerprint access control

Freevolt Technologies has launched the second generation of its flagship access control card, S-Key.

The new battery-less biometric access card featuring Freevolt's patented energy harvesting technology has been upgraded to embed Fingerprints' world-pioneering 'T2' biometric sensors. This will bring stronger authentication to access control, offering new levels of security and convenience.



## Vancouver International Airport deploys 3D LiDAR surveillance solution



Quanergy Solutions, a global provider of 3D LiDAR (Light Detection and Ranging) security solutions, was chosen by Vancouver International Airport (YVR) to analyse footfall and passenger journeys and ultimately improve passenger happiness. Quanergy's solution surpassed the capabilities of existing solutions and delivered accurate, data-driven insights for enhanced operational efficiency (airport volumes, associated waiting times), passenger satisfaction, and cost savings.



### Glevum Always Deliver!

Bruton Knowles have used Glevum Security for over 10 years for their head office and also managed property for our clients. Circumstances change, sometimes we need unlocks and locks at different times and dates, and Glevum ALWAYS deliver. Fabulous staff and a great company to deal with. Keep up the good work!

“

Samantha P

IN THE NEWS



# Top Security Tips To Keep Safe This Christmas

For the average burglar, these dark winter months are an absolute dream ticket for sneaking into homes and business premises without being seen. It stands to reason that our homes and businesses are more vulnerable to theft in the dark, dreary, cold of winter.

Making your home as unappealing as possible to burglars is the key for preventing it from being burgled, proven to be an effective method across the UK. Especially when it is dark outside from 4PM onwards, having no lights on at home usually means the premises is not occupied at that current moment, which can lead to quick and easy burglaries. At these times, people are usually still working, and this is prime time for burglaries.

***“Did you know, the average burglary only takes between 8-12 minutes and are thought to increase by 35% during the winter months!”***



Burglars usually do their homework; they will not just break into any place at random without doing their research! Initially, they'll scan around the block and take note of what's going on, taking note of ins and outs and if the premises is lock and key entry or access controlled.

Even though the danger of burglary varies depending on the kind of property and the amount of protection that is in place, it's worth it to take the required steps to effectively protect yourself and your home from a break in. Sometimes, houses and businesses can have noticeably bad privacy, meaning it is easy for potential burglars to walk in and out of the







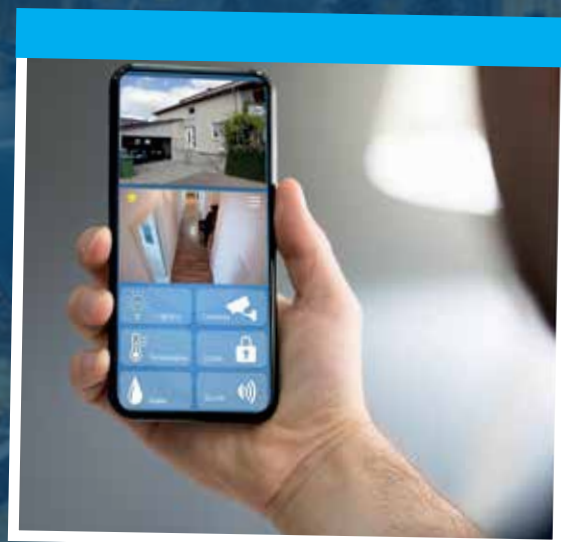
building without a second thought. Particularly businesses that are open to the public and have not invested in CCTV systems.

### Invest In High Levels Of Security

People usually believe that high fences and shrubbery can stop potential attackers, as this will screen your property or premises from intruders. But in fact, it is more likely to screen them from being seen when they break in! This is good for burglars because they'll be hidden from your neighbours and can carry out their thievery in private! Security products such as cameras and intruder alarms are also great deterrents for burglars, making your home a less attractive target and giving your home another layer of security.

### Give The Illusion That Someone Is Home

No, we don't mean Home Alone standards of illusion, but more keeping the odd light on at home. Smart home security is becoming more and more popular across the UK and is definitely something you should consider to help secure your home in the winter, allowing you to control your lighting when you are not home. This allows you to access lights or electrical appliances in your home from your smart phone, allowing you to create this illusion that someone is home.



### Secure All Garages and Sheds

About 87% of UK houses have gardens, which is why garden security and its effect on our overall home security is so important. It may be wet and cold outside, but you must not forget about your outdoor space, especially as many people keep valuables in these outhouses and sheds such as bikes and tools. Garages and sheds are great outdoor spaces for storage but can be a high-risk target.

### Don't Share On Social Media

Christmas can be a time where families look to go abroad or to other family houses to share the celebration. If this is the case for you and your family, make sure you secure your home whilst on holiday by not sharing anything until you are back so that people aren't aware your home is empty! At the same time, make sure all windows are securely shut and locked.

These are just some of the many tips on how to keep yourself and your family safe this winter. If you would like some more information on how we can help provide you with expert security services this winter, make sure you contact us today!



# MEET THE TEAM



**Mark Baker** - Director

Mark served sixteen years in the Royal Navy gaining a wealth of experience in Operations, Financial Matters and Resource Management. On leaving the Senior Service, he spent seven years working in the Emergency Control Room with Gloucestershire Police.



**Steve Barnett** - Director

Steve has been working within the Security Sector for over twenty years working for some of the major security companies within London. His knowledge of the industry covers all aspects of security which include Training and Operational Management.



**Derek Martin** - Manager

Derek joined Glevum Security in May 2003 as HR Manager. Prior to joining Glevum Security, Derek worked as a HR and Facilities Manager in the Communications industry for 4 years. He commenced his CIPD qualifications at Gloucester University in 2000 and is highly regarded as a HR Generalist within the Security industry.



**Sue Baker** - Manager

Sue has been working in the Security industry since 1999. Sue joined Glevum Security in 2007, becoming their Quality Support Manager. She has a strong belief in Customer Service and thrives on building customer relations by meeting and exceeding customer expectations.

## CURRENT THREAT LEVEL IN THE UK

# ↓ SUBSTANTIAL

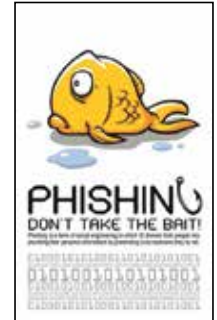
Simply download the free, no ads, citizenAID App from either Google Play or Apple app Store. The citizenAID app will reduce the anxiety from difficult decision making in an unfamiliar situation. Follow the logical steps to do the right things in the right order. Stay safe and help us... to help you... to SAVE LIVES.

GET  
THE FREE  
citizenAID  
APP  
TODAY

**SUBSTANTIAL means an attack is likely**



**CrimeStoppers.**



## Glevum Security Ltd

16 Wheatstone Court  
Davy Way  
Waterwells Business Park  
Gloucester  
GL2 2AQ

t: 01452 729713

e: [info@glevum-security.co.uk](mailto:info@glevum-security.co.uk)

w: [glevum-security.co.uk](http://glevum-security.co.uk)

